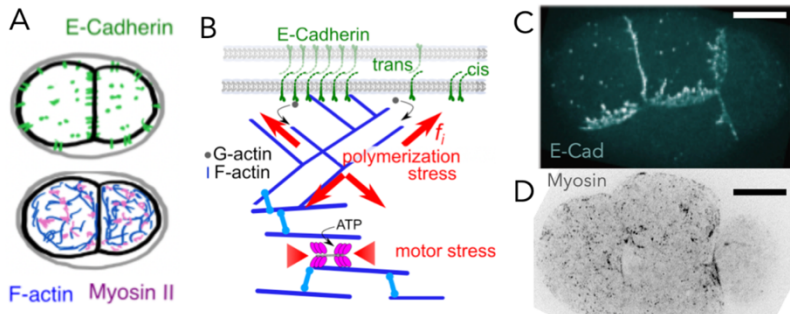


Postdoctoral Fellow Positions in multiscale dynamics of cell contact formation and remodeling in early *C. elegans* embryos

The **Munro (Chicago, USA), Lenne and Ruprecht (Marseille, France)** groups seek 2-3 postdoctoral fellows to join a newly funded (NSF/ANR) international collaboration. The overall goal of this effort is to **understand how cell-cell contacts in early *C. elegans* embryos are shaped by the dynamic interplay of adhesion, biochemical signaling, and actomyosin contractility**, using a combination of genetics, biophysics, advanced (single molecule and super-resolution) microscopy and mathematical modeling.



Adhesive and contractile networks in the early *C. elegans* embryo (A). Molecular players at cell-cell contacts (B). Distribution of E-Cadherin (C) and Myosin-II (D) at 4-cell stage

Candidates will receive cross-training in two or more of these areas. Successful candidates will be based either in Chicago or Marseille, but will have the opportunity to travel between the two sites and will participate in regular joint group meetings of the entire group.

Minimum Qualifications: A PhD is required by start of appointment, in biology, bioengineering, biophysics, mathematical biology or a closely related field. Prior experience in, and/or commitment to, working in a highly interdisciplinary setting is essential.

Salary: Commensurate with qualifications and experience, plus benefits.

Appointment Type: Twelve-month full-time non-tenure track appointment, with potential to be extended annually for a maximum term of 4 years, subject to satisfactory performance and funding; the positions are currently funded for two years.

To Apply: Interested applicants should submit a letter of interest, a statement of prior research experience and professional interests, a CV, and contact information for three professional references to either: emunro@uchicago.edu or pierre-francois.lenne@univ-amu.fr

Start Date: September 2022 or later.

Questions may be addressed to emunro@uchicago.edu or pierre-francois.lenne@univ-amu.fr

